

Timer type 726 018 031



120 minute, 4 vertical contacts,
mounted with two screws 2,9x8

Applications:

*Battery chargers, ultrasonic cleaners, saunas, tanning beds, medical equipment, dryers, small appliances, and food service equipment.

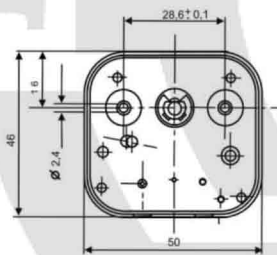
Standard Features:

- * max 16 A (active power) and 3 A (for reactive (inductive) power) – 240 V
- * max 10 A (active power) 2 A (for reactive (inductive) power) – 400 V
- * ¼ HP 120/250 Vac 60Hz
- * ambient temperature 120 °C

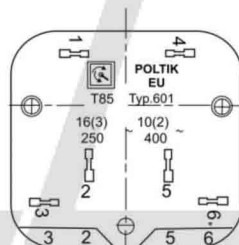
Certificates

- * VDE, ENEC, CSA, UL

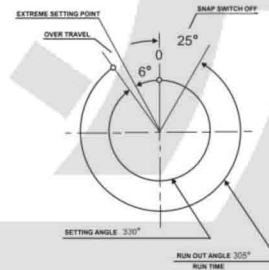
MOUNTING FOR TIMER



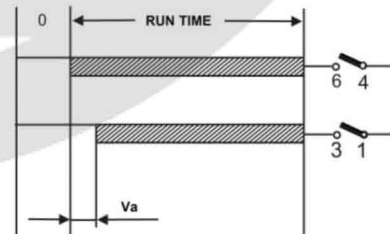
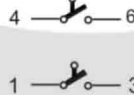
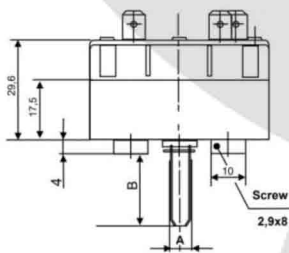
TYPE OF COVER



TURNING ANGLE

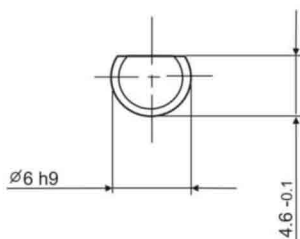


TYPE OF SWITCH



Va=8 1/2

SHAPE OF SHAFT



POSITION "0"

