

Timer type 726 018 000



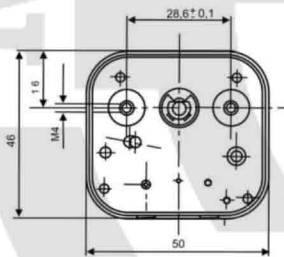
120 minute, 4 horizontal contacts,
mounted with two screws 2,9x8

Applications: * Battery chargers, ultrasonic cleaners, saunas, tanning beds, medical equipment, dryers, small appliances, and food service equipment.

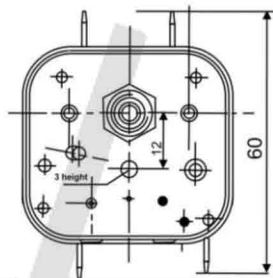
Standard Features: * max 16 A (active power) and 3 A (for reactive (inductive) power) – 240 V
* max 10 A (active power) 2 A (for reactive (inductive) power) – 400 V
* 1/4 HP 120/250 Vac 60Hz

Certificates: * VDE, ENEC, CSA, UL

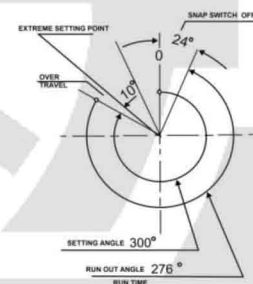
MOUNTING FOR TIMER



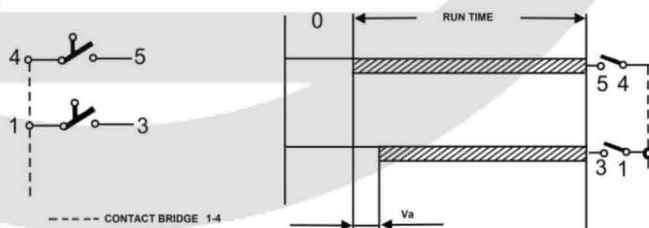
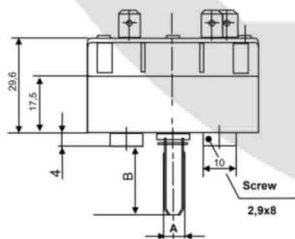
MOUNTING FOR TIMER



TURNING ANGLE

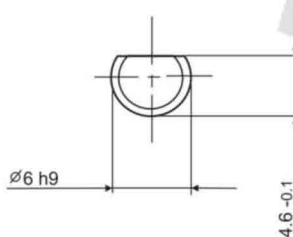


TYPE OF SWITCH



Va=8 1/2

SHAPE OF SHAFT



POSITION "0"

