

# Timer type 726 016 052



60 minute, 6 vertical contacts, with signal,  
Mounted with two screws 2,9x8

**Applications:**

\*Battery chargers, ultrasonic cleaners, saunas, tanning beds, medical equipment, dryers, small appliances, and food service equipment.

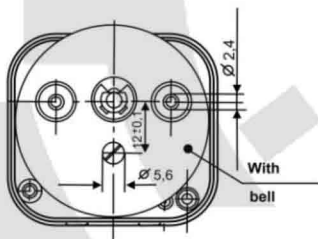
**Standard Features:**

- \* max 16 A ( active power) and 3 A (for reactive (inductive) power) – 240 V
- \* max 10 A (active power) 2 A (for reactive (inductive) power) – 400 V
- \* ¼ HP 120/250 Vac 60Hz

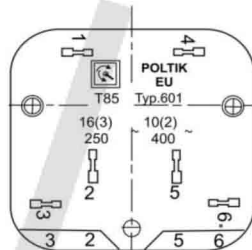
**Certificates:**

\* VDE, ENEC, CSA, UL

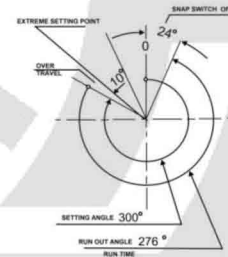
**MOUNTING FOR TIMER**



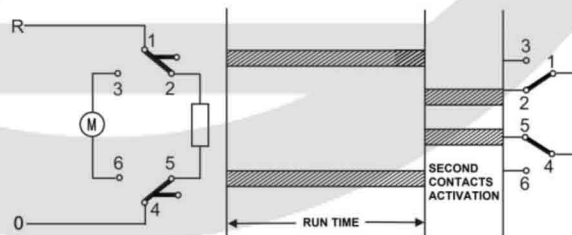
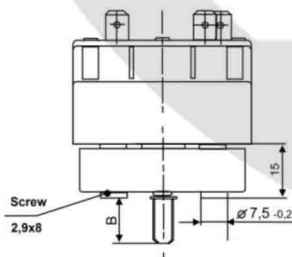
**TYPE OF COVER**



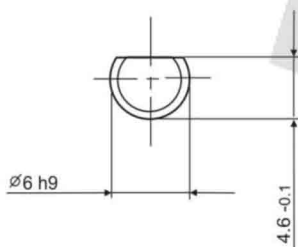
**TURNING ANGLE**



**TYPE OF SWITCH**



**SHAPE OF SHAFT**



**POSITION "0"**

