

# Timer type 726 010 009



4 minute, 6 horizontal contacts, hold function  
Mounted with two screws 2,9x8

**Applications:**

\*Battery chargers, ultrasonic cleaners, saunas, tanning beds, medical equipment, dryers, small appliances, and food service equipment.

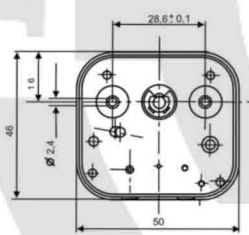
**Standard Features:**

- \* max 16 A ( active power) and 3 A (for reactive (inductive) power) – 240 V
- \* max 10 A (active power) 2 A (for reactive (inductive) power) – 400 V
- \* ¼ HP 120/250 Vac 60Hz

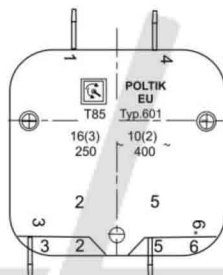
**Certificates:**

\* VDE, ENEC, CSA, UL

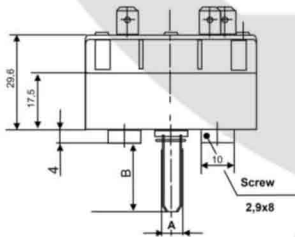
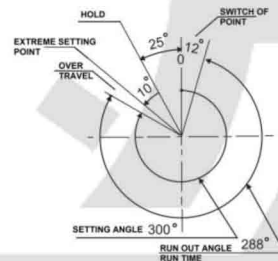
MOUNTING FOR TIMER



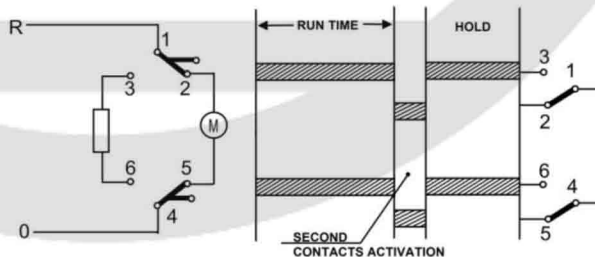
TYPE OF COVER



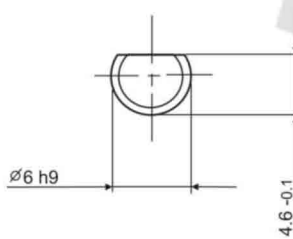
TURNING ANGLE



TYPE OF SWITCH



SHAPE OF SHAFT



POSITION "0"

