

# Timer type 726 006 050



60 minute, 4 horizontal contacts, with signal mounted with two screws  $\varnothing 3,2$

**Applications:**

\*Battery chargers, ultrasonic cleaners, saunas, tanning beds, medical equipment, dryers, small appliances, and food service equipment.

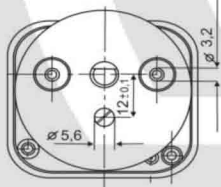
**Standard Features:**

- \* max 16 A ( active power) and 3 A (for reactive (inductive) power) – 240 V
- \* max 10 A (active power) 2 A (for reactive (inductive) power) – 400 V
- \* 1/4 HP 120/250 Vac 60Hz
- \* 15A 1000 WT

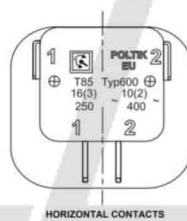
**Certificates:**

\* VDE, ENEC, CSA, UL

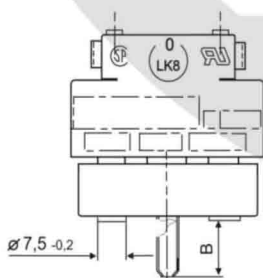
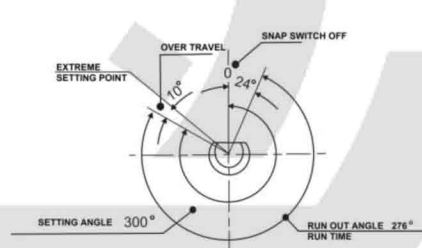
**MOUNTING FOR TIMER**



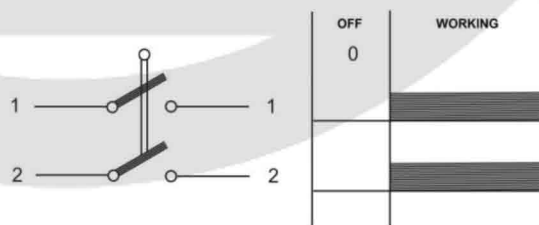
**TYPE OF COVER**



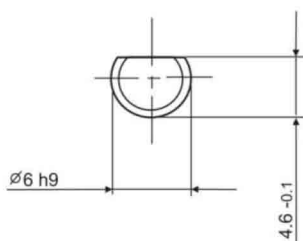
**TURNING ANGLE**



**TYPE OF SWITCH**



**SHAPE OF SHAFT**



**POSITION "0"**

