

# Timer type 726 006 029



60 minute, 4 horizontal contacts, hold function,  
mounted with two screws  $\varnothing 3,2$

**Applications:**

\*Battery chargers, ultrasonic cleaners, saunas, tanning beds, medical equipment, dryers, small appliances, and food service equipment.

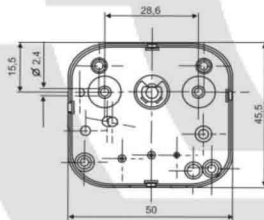
**Standard Features:**

- \* max 16 A ( active power) and 3 A (for reactive (inductive) power) – 240 V
- \*max 10 A (active power) 2 A (for reactive (inductive) power) – 400 V
- \* $\frac{1}{4}$  HP 120/250 Vac 60Hz
- \*15A 1000 WT

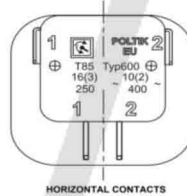
**Certificates:**

\* VDE, ENEC, CSA, UL

MOUNTING FOR TIMER

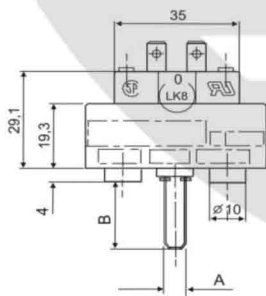
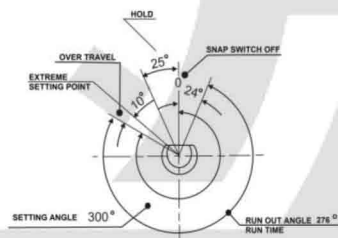


TYPE OF COVER

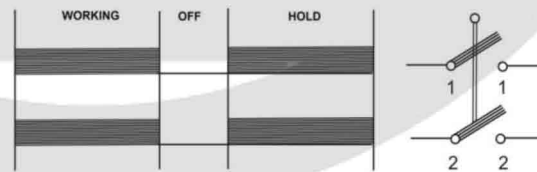


HORIZONTAL CONTACTS

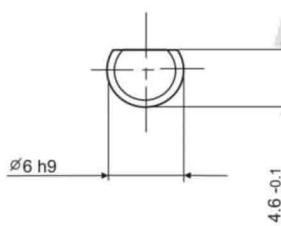
TURNING ANGLE



TYPE OF SWITCH



SHAPE OF SHAFT



POSITION "0"

