

Timer type 726 005 016



30 minute, 4 horizontal contacts, hold function ,
mounted with two screws $\varnothing 3,2$

Applications:

*Battery chargers, ultrasonic cleaners, saunas, tanning beds, medical equipment, dryers, small appliances, and food service equipment.

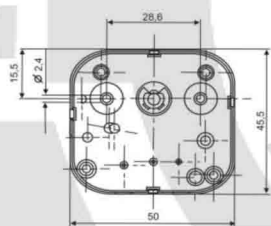
Standard Features:

- * max 16 A (active power) and 3 A (for reactive (inductive) power) – 240 V
- * max 10 A (active power) 2 A (for reactive (inductive) power) – 400 V
- * ¼ HP 120/250 Vac 60Hz
- * 15A 1000 WT

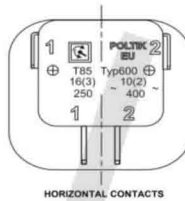
Certificates:

* VDE, ENEC, CSA, UL

MOUNTING FOR TIMER

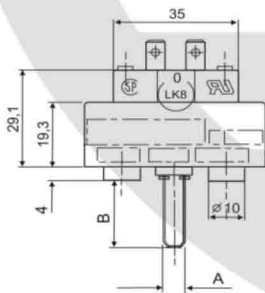
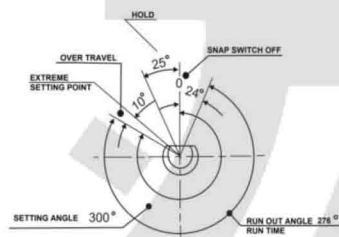


TYPE OF COVER

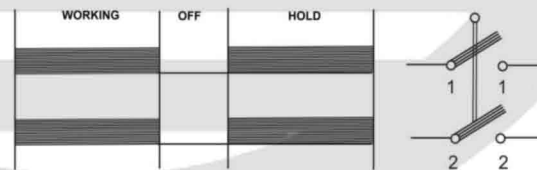


HORIZONTAL CONTACTS

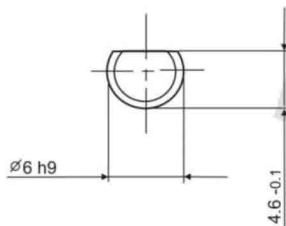
TURNING ANGLE



TYPE OF SWITCH



SHAPE OF SHAFT



POSITION "0"

