

# Timer type 726 004 050



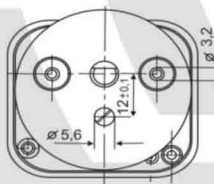
15 minute, 4 horizontal contacts, with signal,  
mounted with two screws  $\varnothing 3,2$

Applications: \*Battery chargers, ultrasonic cleaners, saunas, tanning beds, medical equipment, dryers, small appliances, and food service equipment.

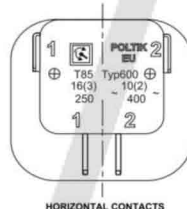
Standard Features: \* max 16 A ( active power) and 3 A (for reactive (inductive) power) – 240 V  
\* max 10 A (active power) 2 A (for reactive (inductive) power) – 400 V  
\* 1/4 HP 120/250 Vac 60Hz  
\* 15A 1000 WT

Certificates: \* VDE, ENEC, CSA, UL

MOUNTING FOR TIMER

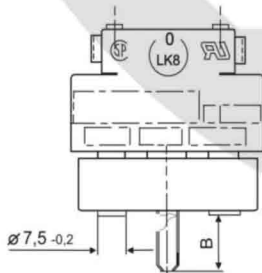
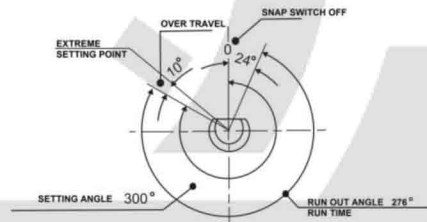


TYPE OF COVER

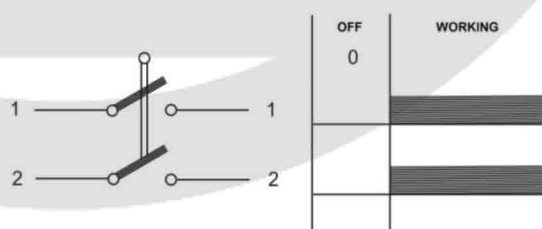


HORIZONTAL CONTACTS

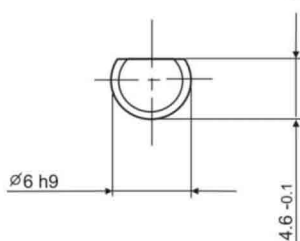
TURNING ANGLE



TYPE OF SWITCH



SHAPE OF SHAFT



POSITION "0"

