

# Timer type 726 000 013



6 minute, 2 horizontal contacts,  
Mounted with two screws  $\varnothing 3,2$

Applications:

\*Battery chargers, ultrasonic cleaners, saunas, tanning beds, medical equipment, dryers, small appliances, and food service equipment

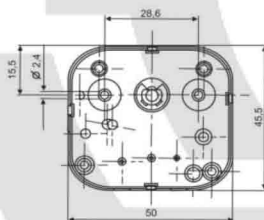
Standard Features:

- \* max 16 A ( active power) and 3 A (for reactive (inductive) power) – 240 V
- \* max 10 A (active power) 2 A (for reactive (inductive) power) – 400 V
- \* ¼ HP 120/250 Vac 60Hz
- \* 15A 1000 WT

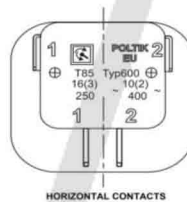
Certificates:

- \* VDE, ENEC, CSA, UL

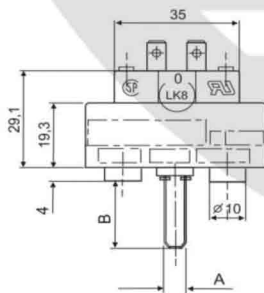
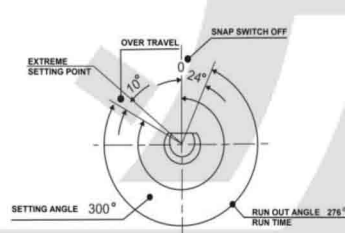
MOUNTING FOR TIMER



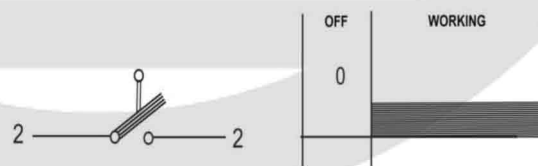
TYPE OF COVER



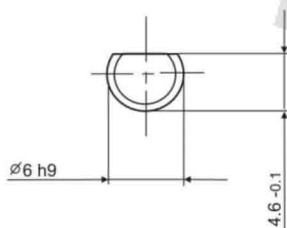
TURNING ANGLE



TYPE OF SWITCH



SHAPE OF SHAFT



POSITION "0"

